

Annual Report 2021

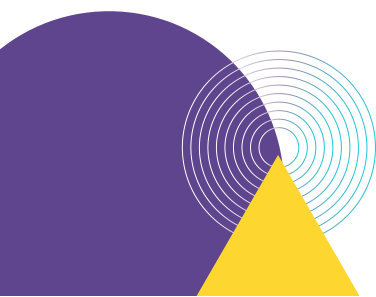
It's Your House!





Table of Contents

- 1** **About us**
- 2** **Our House**
- 3** **Our people**
- 4** **Chair's report**
- 5** **Manager's report**
- 6** **Community Development**
- 7** **Program and activities**
- 8** **Visions of 2021**
- 9** **Treasurer's report**
- 10** **Financial statements**



1



About Us

Span Community House is a dynamic hub of community support, adult learning and sustainability in the heart of Thornbury.

We offer skills development, pathways to further study or employment, creative activities, support services, activities for fun and a thriving community garden and composting program.

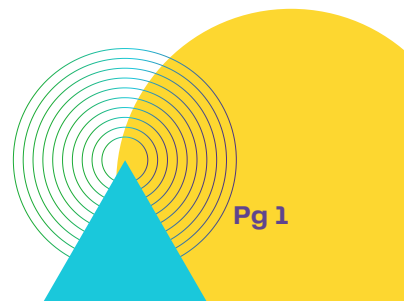
Our range of programs is very diverse, covering areas from digital literacy to creative, health and wellbeing, to gardening, sustainability and special events.

Our facilities are accessible for all, and we welcome all members of the community.



We acknowledge the Wurundjeri people of the Kulin Nation, who are the traditional custodians of the unceded land where Span is based.

We also pay our respect to Wurundjeri Elders past and present and extend that respect to all Aboriginal and Torres Strait Islanders.



1



Thanks & Acknowledgements

Adult, Community and Further Education (ACFE) board and staff
Butterworth Bookkeeping
Commonwealth Bank Fairfield staff
Commonwealth Home Support Program (CHSP) and staff
Darebin City Council, councillors and staff
Darebin Hard Rubbish Heroes (DHRH)
Darebin Neighbourhood House Network
Darebin Presbyterian Church
Department of Education and Training
Department of the Environment and Energy
Department of Health
Department of Health and Human Services
Department of Industry, Innovation and Science
East Preston Community Centre
Fantastic Furniture – Preston
Grip Equip Pty Ltd
Home and Community Care Program for Younger People (HACC-PYP)
Inner North Community Foundation
Neighbourhood House Coordination Program (NHCP)
North East Neighbourhood House Network
Office of Hon Ged Kearney MP and staff
Office of Kat Theophanous MP and staff
OM:NI (Older Men: New Ideas)
Second Bite
The Festive Shop – Coburg
Tim Beacham, Computer Solutions
Transition Darebin
Woman-Made



2

Our House

VISION

Empowering people to create an inclusive, healthy and sustainable community.

MISSION

Span Community House will develop and support the local community through educational, social inclusion and recreational activities:

- Community development and connectedness
- Sustainability
- Empowerment of marginalised groups and those experiencing economic disadvantage
- Health and wellbeing
- Social justice
- Education and knowledge



2



VALUES

Span provides programs and services underpinned by the following values:

Inclusiveness – We welcome and embrace diversity of culture, sexuality, religious beliefs and all abilities.

Quality – We are committed to operating our organisation with a high degree of competency and professionalism.

Empowerment – We are committed to supporting and upskilling our community members so they can improve their own circumstances and contribute to the creation of an inclusive, healthy and sustainable community.

Responsiveness – We are proactive in identifying the needs of our community and providing timely programs and services to respond to its needs.

Equity – We will treat everybody fairly and ensure access, opportunity and empowerment for all people, while at the same time striving to identify and eliminate barriers that have prevented the full participation of some groups.

Integrity – We operate our organisation and treat people with respect, honesty and fairness. Our decision making, and our processes aim to be transparent.

Sustainability – We adopt and model practices that contribute to the sustainability of our planet as well as providing education and projects that empower our community in these practices.

We are also committed to the financial sustainability of our organisation by ensuring we comply with our funding bodies criteria and by proactively seeking and managing a variety of income streams.



3

Our people

STAFF

Colleen Duggan
Glenn Evans
Jennifer Nathan
Julie O'Brien
Katrina Forstner
Leana Maloney
Sarah Finlay
Sarah McNamee
Christine Pendelton

TUTORS / FACILITATORS

Bruce Hatfield
Catherine Donnelley
Danielle Afif
David Westlake
Marina Clark
Rani Hughes
Sheena Mathieson
Tania Chandler

BOARD

Briare McElhone
Elisa Grassa
Linda O'Connor
Natasha Maugueret
Renee Daniele
Wennie van Riet
Yu Sun
Freya Shaw

VOLUNTEERS

Art for All Abilities

Brooke
Julian

Community Lunch

Zini

Composting

Barb C
Renita

Computer Support

Sean

Food Relief

Steve

Grounds

Sean

Office

Barbara C
Judi

Sensitive Santa

Sharon
Stephen
Therese
Lyn
Laura

Tai Chi

Sarah F

Tax Help

Garry

Website

Judi



3

GARDENING TEAM

Andrew

Anton

Barb C

Cedrick

David

Dom

Fabian

Jennifer N

Judi C

Josh

Julie O'B

Kathleen

May

Nerys

Nora

Peter

Saumane

Stephen



4



Chair's report

I am incredibly proud that Span has maintained its focus on empowering people to create an inclusive, healthy and sustainable community this past year. The circumstances were challenging, with ongoing lockdowns constraining us physically and contributing to social isolation and loneliness in our community. But those unique challenges also created opportunities to foster resilience and explore new ways to connect with and support each other.

Span's work and leadership in the sustainability sector has been particularly noteworthy. Events such as the Sustainability Fest and reLove Community Garage Sale were incredibly well attended and extended the excellent work Span is already doing with the food waste and composting program, the RRR (repair, reuse, recycle) hub project and our very good bugs garden crew in Span's community garden.

This past year has also been a time of optimism and remembered routines, with the return to onsite delivery of classes and important social connectors such as Span's community lunches, the family carers' events and Sensitive Santa. I have felt a renewed vigour and energy in Span over the last few months that is infectious.

And of course none of it would be possible without Span's amazing staff and volunteers. A huge and heartfelt thank you to Colleen, Julie, Sarah F, Sarah M, Leana, Glenn, Jennifer and Katrina and our tireless admin volunteers Barb and Judi. And thank you too to my fellow volunteer board members: Freya, Wennie, Yu, Linda, Renee and Kristin.

Finally, thank you to our members and community for your engagement, enthusiasm and contribution to Span. It is a space for and by you and I cannot wait to see what you bring in 2022!

Natasha Mauguere



5

Manager's report



Well what a year 2020 was!! This is an exact quote from my manager's report for 2020. 2021 turned out to be a year that neither disappointed or surprised us.

The year started with much promise with community members returning to Span. Then the see-sawing started. However, the staff, volunteers and participants were ready to return to online delivery and maintain some sort of social connection.

It amazed me yet again, how well the tutors and participants managed undertaking activities online, particularly those that are hands-on activities such as gardening, cooking and art. Leana, Julie, Sarah and myself always hosted the zoom sessions to keep our connections with the community. This also helped the tutors to focus on working with the participants rather than having to monitor the technology.

Thank you Bruce, Catherine, David, Glenn, Katrina, Rani, Sheena, Jennifer and Tania, for working so hard to maintain the connections and interest with the participants. These activities covered writing, cooking, good bugs gardening group and health and wellbeing and family carers.

We said farewell to Sarah M and Glenn this year. However, we were very lucky to have Julie, Sarah F and Katrina join us. Jennifer also joined the team as the family carers project coordinator. Shortly after they joined us we were plunged into lockdown and working from home. It was a difficult way to commence a new job and develop relationships with our community, however they coped extremely well.

Two highlights of the year were the development of the sustainability project which enabled us to develop the RRR Hub and strong partnerships with other environmental and sustainability groups. The other highlight was the supporting family carers locally project which proved to be a little different to what we originally planned, as working with family carers and support was mainly undertaken online but with some face to face activities.

Thank you to our funders, tutors, facilitators, volunteers, the board and participants. We all worked together, managed to move through 2021, and now look forward to a great 2022.

Colleen Duggan

6

Community Development



Community Development in Action

Introduction

With lockdowns starting and stopping throughout 2021, community development activities were challenging. The main focus was on keeping existing participants engaged.

To do this many Span offerings were again brought online so people could continue to benefit from the activities and connections on offer.

Staff and tutors did a great job in ensuring people felt safe and supported in this way, tailoring classes and offering technical support where needed.



Community composting had been halted due to covid constraints in 2020 and was reestablished again in March 2021 with the help of a small Commonwealth Government grant. The funds were used to engage a Project Coordinator to reinvigorate and improve the previous program.

6



The positive response to the composting service being available again lead to some consideration and investigation of what might be possible to support this further.

Other reuse and recycling options such as bread tags and elastic bands were also being sought by the local community, so we were keen to address this as well.

We identified a funding stream available through the Recycling Victoria Communities Fund that we sought to address some of these issues through, and we were successful in achieving a grant to deliver this project.

Most of the activities delivered as part of this project will be covered in the Sustainability section of this report, but in terms of community development we will share the approach we took to informing the development and delivery of the waste avoidance program here.

Community Survey



We undertook a survey to help us identify to what the community wanted from the kind of sustainability project we were developing and how they wanted to engage with us in a broader sense.

The survey was designed to identify and understand the following:

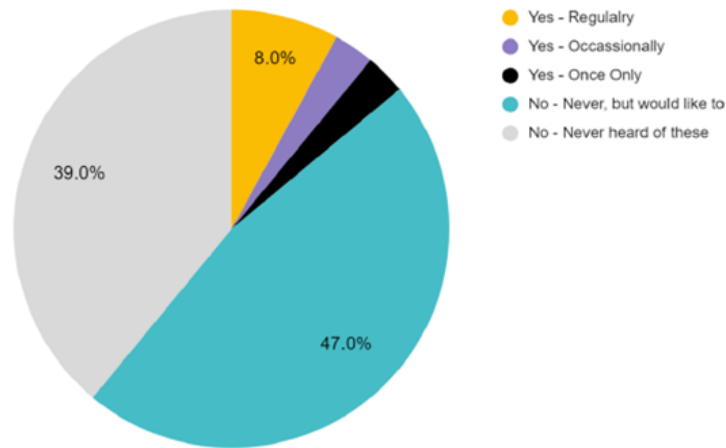
- Previous experiences of Span
- Future interests in waste avoidance and sustainability
- Ongoing engagement preferences

In terms of the sustainability project the survey revealed a number of interesting things for us to consider and work with.

6

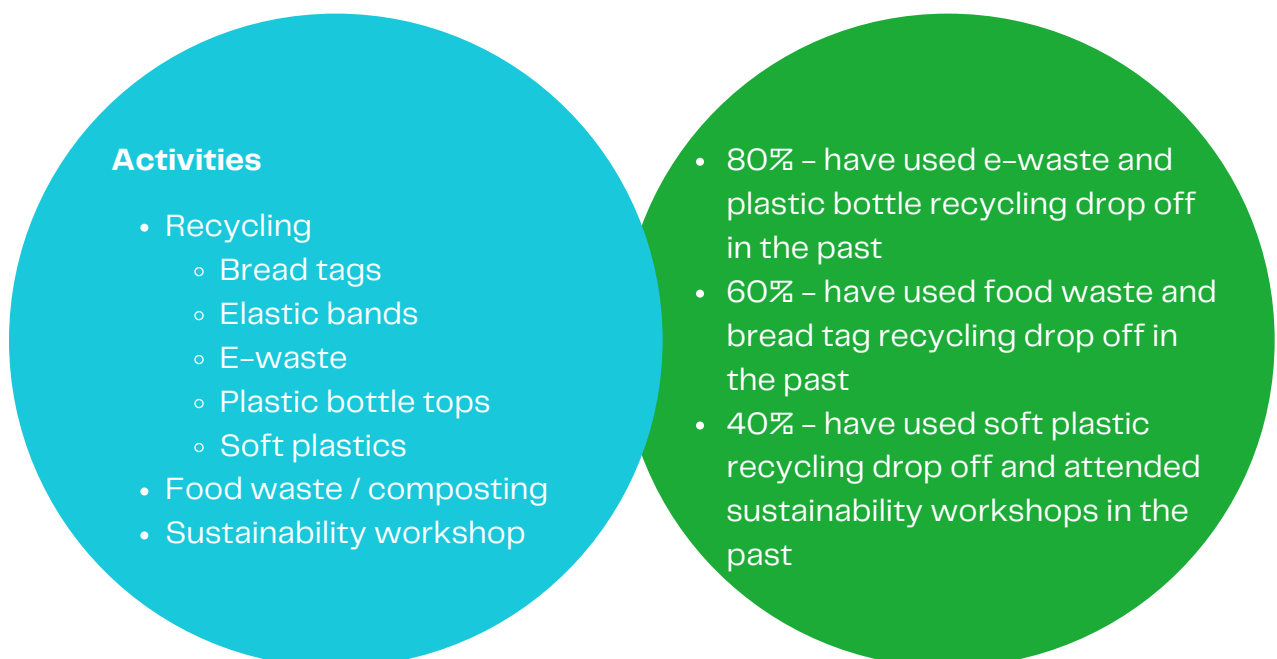


People that have used recycling initiatives or attended workshops before



- 47% – haven't engaged with previous Span sustainability initiatives but are keen to
- 8% – consider themselves regular users
- 6% – occasional and once only participants

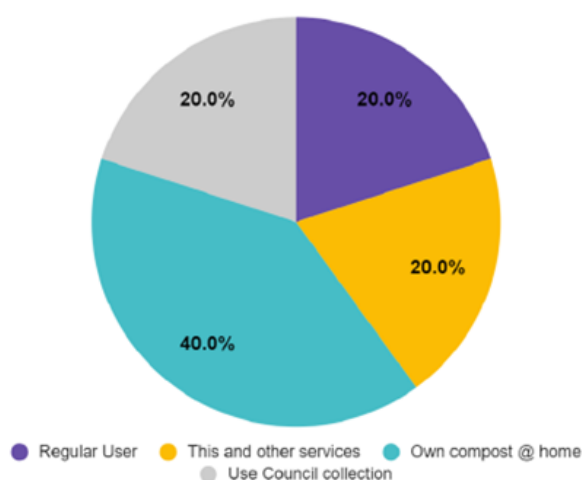
Which Span sustainability initiatives people have participated in before



6

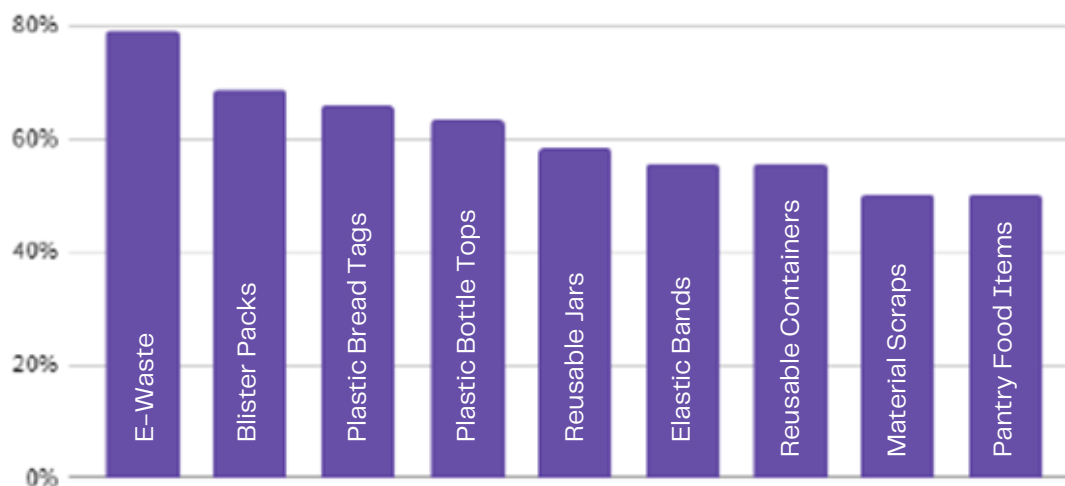


Knowledge or use of the Span food waste composting program



- 40% – have their own home composting systems
- 20% – are regular users of the Span drop off system
- 20% – use the Span drop off and other services
- 20% – use the Darebin Council kerbside service

Understanding prioritisation / consideration of materials



- 79% – respondents wanted e-waste
- 60% – over 60% respondents wanted blister packs, bread tags, bottle tops
- 50% – over 50% of respondents wanted reusable jars, elastic bands, reusable containers and material scraps
- 50% – respondents indicated they were keen to contribute pantry food items for the Span food relief program

6



Collection Stations

To further inform the community of our sustainability work, we undertook a number of 'live experiments' in terms of understanding what materials people were seeking solutions for.

Event Trial

As part of our first event for the funded sustainability project we included a waste station with over 20 waste streams to test what items the community was keen to dispose of.

- Top three by weight – glass jars, gel packs and pet rescue
- Top three by items – bottle tops, batteries and blister packs

At the event, we also had whiteboard spots where people could tell us about the things they wanted to see solutions for and we got some good consistency between suggestions here and what was dropped off on the day which helped reinforce some of the priorities identified in the survey that we would focus on for the start of the project.



Reception Trial

To further build on what we learned from the survey and event, we have continued to run a live experiment at our internal collection hub where people are dropping items off.

This allows us to see which solutions are most sought after and enables us to have conversations with community participants about other items they would like to see included as we evolve.

6



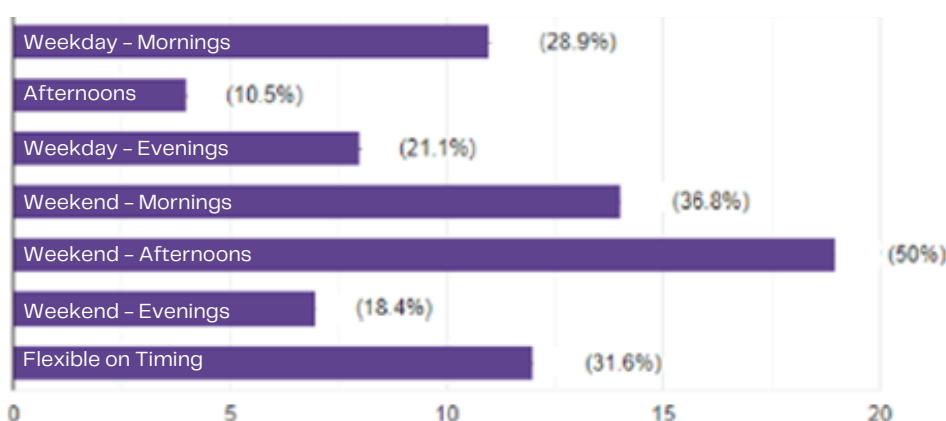
More Accessible Information

Throughout the year we reviewed and updated various communication methods and channels. The purpose of this was to:

- Develop a more cohesive look and feel to Span promotional materials
- Make easier for people to find and engage with our materials
- Make easier for people to understand what we have to offer
- Offer a variety of ways people could reach out or sign up
- Increase engagement in online and onsite activities

Future Engagement Activities

The Community survey mentioned earlier also tested more general considerations and revealed the following of relevance in terms of working with the community.



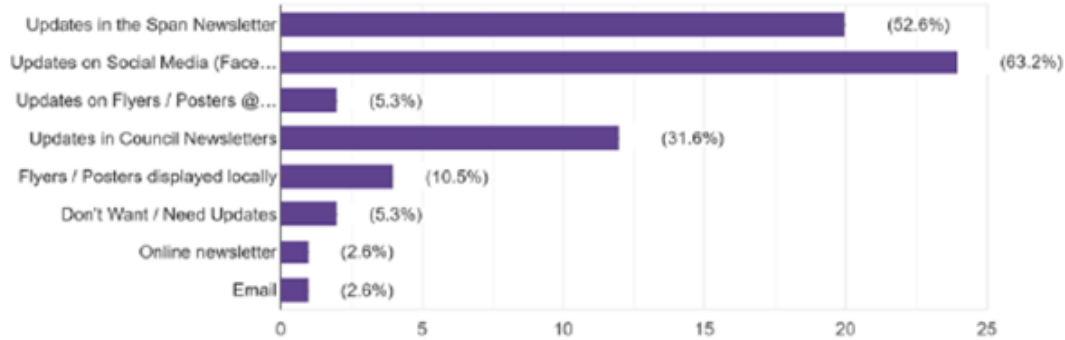
Timing considerations that are important for people joining events

- 50% - weekend afternoons were nominated by the majority as the best time for events to be held
- 37% - weekday mornings were the second most popular time nominated
- 32% - respondents indicated they are flexible on timing of events

6

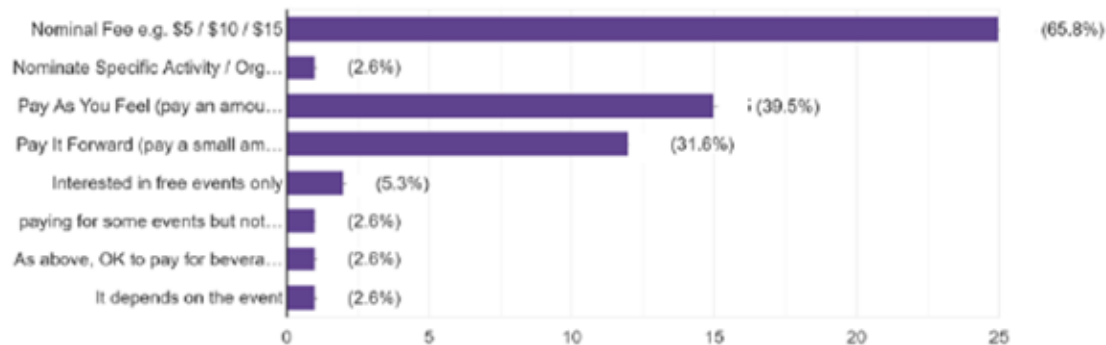


Communication channels people prefer for staying informed



- 63% – respondents indicated that social media was their preferred way of hearing about the project
- 53% – respondents like to receive updates via the Span Newsletter
- 32% – people indicated that the Council Newsletter was a good way for them to be informed

Potential charging approaches that people would be comfortable with



- 66% – happy to pay a nominal fee for events
- 40% – are comfortable with a 'pay-as-you feel' model
- 2% – happy to pay a little extra so that others can participate on a reduced fee / free basis

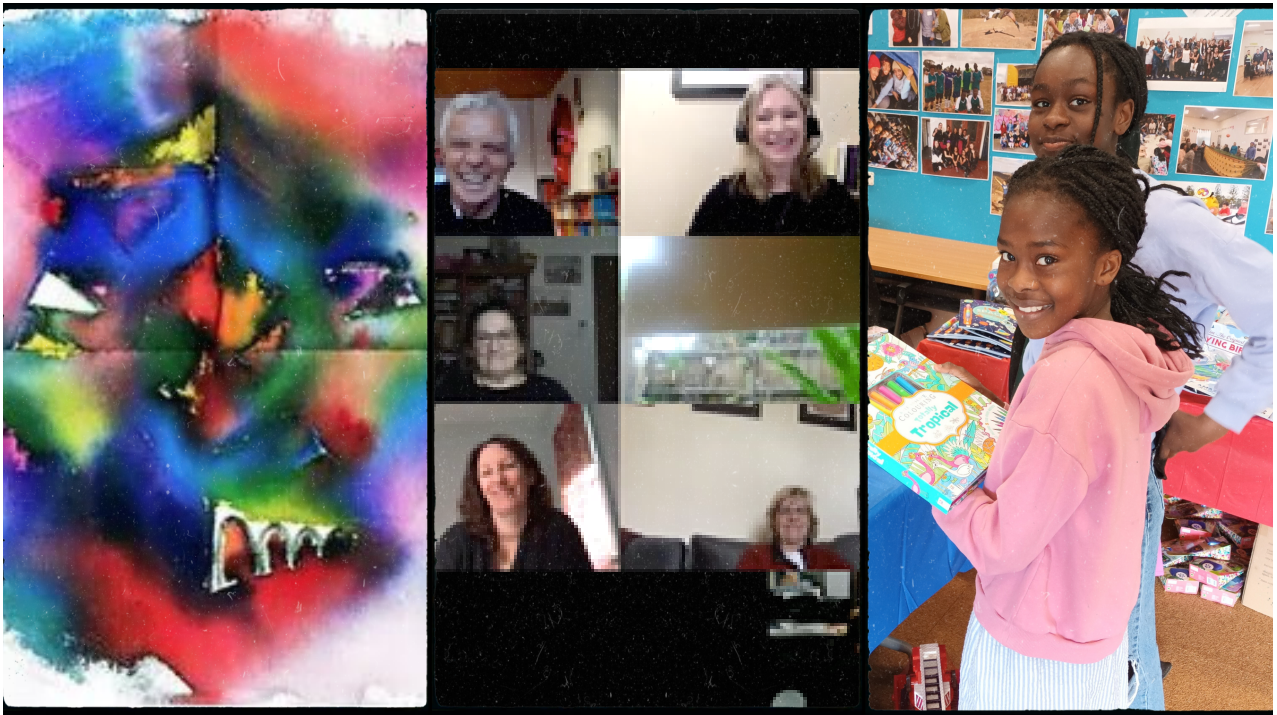
We are grateful for the community being so open in various ways in telling us about what they want to see more of here at Span.

As always, we are very keen to hear new ideas and to see what we might be able to deliver together with or for the community. Please email Julie @ cd@spanhouse.org if you have anything you would like to discuss or suggest.

Julie O'Brien

7

Program Coordination and activities



7

Program Coordination



Zoom Zoom Zoom

I am having trouble connecting ... try logging off and on again, ... and again ... I can't hear you ... you're on 'mute', press the button in the bottom left corner of your screen ... hello! I can't see everyone ... select 'gallery' top right corner ... ah yes, now I can see you all

These online exchanges became so familiar to many of us during 2021 as we navigated yet another year dominated by rolling lockdowns. Most of Span's programs and activities were able to adapt and continue thanks to the wonders of the digital world, including: Art for All Abilities, Cooking for All Abilities, Creative Writing, Gentle Exercise, Good Bugs Community Garden Group, Pilates, Tai Chi, Tai Chi for Healthy Minds and Bodies, Thornbury Writers Workshop, family carers support and more.

Zoom enabled us to be connected, to keep learning, stay well, share our experiences and support each other. As either participants, volunteers, tutors or staff, we were all learning together how to make this different world work for us. Meeting challenges we hadn't considered a year ago and succeeding.

Sitting at our kitchen tables and on our couches, propping up our devices, blurring our background zoom picture or choosing a photo of an exotic destination we could only dream of, avoiding tripping over power cords, dogs, cats or kids. Simultaneously on our phones, computers or lap tops, texting, zooming, calling. Looking at each other in our individual little boxes on the screen.

Often our online sessions would begin with checking in with each other to see how we were going, sharing tips on what was helping us through the endless days of lockdown. The simple things in our lives became more important, going for a walk around the neighbourhood and noticing the trees losing their autumn leaves or hearing the birds singing, making or receiving a call from a family member or friend, or having a chat to your neighbour as you took the bins out.

7



I started working at Span in May and almost immediately Melbourne went into lock down and there I was working from home at the kitchen table with laptop, phone and headphones at hand, like so many of us.

Learning how to schedule and host zoom meetings, send out invitations to sessions, and assisting participants to make everything work. How lucky were we to have this technology available to keep connected and keep participating in programs. It felt like a thread connecting to a wider reality.

I became so aware of how important Span's programs were to everyone during the lockdowns, helping keep our spirits high, keeping a routine and connecting with each other. I was so impressed with everyone's determination and persistence to make the technology work and to be there, and the support we gave each other and received from family, friends and support workers to achieve this. Truly a community effort.

The year closed with tentatively returning to Span and in-person sessions, shifting from our one-dimensional screen realities to the multi-dimensional and at times overwhelming worlds. Yet again charting new waters – masks, vaccination certificates, QR codes, checking in, government regulations, sanitising regimes, welcoming in fresh air with open doors and windows, social distancing. Sessions outside, blended sessions both online and in person – adjusting to being with others and 'staying safe'. Sometimes finally meeting someone for the first time in person – oh you're taller than I thought!

Despite the challenges and disruption caused by Covid, new participants have continued to join Span's programs, including a growing number of people with NDIS plans who have enjoyed and benefited from our programs. Span has also challenged and expanded the concept of all abilities, especially in the Art for All Abilities program where several new artists have joined the group creating a truly all-inclusive environment.

I would like to sincerely thank all our volunteers who have continued to support and contribute to Span's community with commitment and generosity through the unique challenges of 2021. Span could not do what it does without you all! I would also of course like to thank our talented tutors whose dedication, creativity and leadership enabled Span's programs to continue to flourish.

Sarah Finlay

7



Art at Span really is for all abilities

Span Art for All Abilities runs on Mondays and Fridays facilitated by the energetic artist and arts facilitator, Sheena Mathieson. These two magic creative groups, where everyone is treated as an equal, and where individuality is celebrated.

Art for All Abilities has continued to thrive over the past year despite the stop, start, stop of Covid times, requiring us to meet on Zoom instead of our preferred face-to-face sessions.

Whilst other programs have struggled to keep their momentum Art for All Abilities has managed to stay connected, to make incredible art and to grow in terms of numbers of participants.

We have always prided ourselves on the inclusive nature of the Art for All Abilities programs. Support workers who may accompany participants are encouraged to participate in our activities, along with our dedicated volunteers Brooke and Julian creating a real feeling of inclusion and great energy.

We are also really proud to announce that in 2021, Span Art for All Abilities became genuinely all abilities with two new participants who technically don't have 'disability' joining as paying participants.

This sets Span Art for All Abilities apart from other art programs offered in the community. A joyful, creative and truly inclusive experience.

Sheena Mathieson



7

Sensitive Santa

Span was thrilled to be able to host our annual Sensitive Santa program on the first weekend of December.

Numbers were down on previous years with families obviously dubious about emerging from lockdown and mixing within community and social settings. The questions pertaining to “how” Sensitive Santa would be delivered were different this year and many were concerned with the children and or Santa having to wear a mask, would it affect the experience, did they have to be double vaccinated etc.

With all these queries answered, momentum began to build. Appointments were booked, new families reached out and booked their little ones in for their first Santa experience. Some had tried shopping centre Santa experiences and found them to be far too noisy, bright and rushed for their child / children to cope with. This highlights that there is a growing need for these activities to be accessible within local community and to support families while making memories with their child / children. New families had been referred by existing families who had spoken fondly of Span’s Sensitive Santa program and had been coming along since the program’s inception.

The program would not be possible without the generous support of our sponsors and volunteers.

Thanks to Susan at The Christmas Store for supplying the decorations, Neil at Fantastic Furniture Thomastown and Grip Equip for the stage set up, Darebin Presbyterian Church and local community members who volunteer their time to bump in and out, assist with meet and greet of the families, play the role of elves and so much more on the day. Sharon our wonderful photographer takes many photos and selects approximately 12–15 images per family and then downloads them onto a USB for the family to take home. All this is free of charge.

Lastly, thanks to our fabulous Santa, Steven. Steven has been supporting our program since the beginning and has such a warm, kind and funny nature that he has established quite a rapport with all involved. Families when booking asked if it is the same Santa this year and were overjoyed when assured yes. The children all love him to bits and Steven adores them in return. I’m baffled how he does it, how he remembers the children and their families, and picks up where they left off the previous year.

Sensitive Santa remains a highlight on the Span calendar and we are keen to invest in and grow the event to allow for greater outreach within Darebin and its surrounds.

Leana Maloney



7

Community Garden



With our wonderful volunteers Ben, Stephen, Peter, Saumane, Anton, Sherille, Cedric, Josh, Dom, David, Andrew, Nerys, Yvonne, Jennifer, Judi and intern Luna we have managed to keep in touch both online and in the garden.

During the times we could meet, we celebrated the changes of the seasons with sharing roasted chestnuts and rhubarb, jacket potatoes cooked to perfection in our dedicated smoker and freshly picked veggies for our end-of-year BBQ, and use in cooking programs and community lunch.

The energy and laughter of the group coming together after periods of being away due to Covid restrictions showed how meaningful the community garden is for everyone's wellbeing and enjoyment for working together, feeling healthy doing physical tasks and transforming the community garden to a flourishing edible oasis.

The Good Bugs group has created social ties and built a greater feeling of community during lockdowns with participants coming to weekly online sessions to share musings from our daily walks and own gardens, including plant successes (and failures!), as well as showcasing plants from previous travels or ties to other countries and cultures.



We learnt about simple plant propagation, soil health, growing tomatoes and tackling pests. We've also had some welcomed changes in the garden with a new irrigation system and two rainwater tanks which have been warmly received by the gardeners for watering during the warmer months.

With the expansion of Span's communal composting system, we installed a dedicated wash station which has streamlined the accessibility and turnover of neighbourhood kitchen scraps collected from our 24/7 community compost drop off, into rich organic compost for the vegetable beds.

Katrina Forstner

7



Sustainability

Sustainable action is a big part of life at Span.

We have always tried to reduce our own footprint and encourage others to do the same in our community.

This year saw us take a significant step forward to expand our work with the engagement of a part-time Sustainability Coordinator, made possible through project funding received from the Recycling Victoria Communities Fund.

The main focus of the project is around waste avoidance and to achieve this Span is delivering lots of new initiatives at the Neighbourhood House.

We are also working with new partners, Darebin Hard Rubbish Heroes (DHRH) and Transition Darebin to deliver events and workshops to help people repair, reuse and recycle more in the community.



As the project has progressed, we have worked to have the community understand what we are offering and engage with what we are doing in tangible ways.

A challenge with the program has been getting a solid volunteer base in place for certain elements, but we are very grateful for the efforts of those that have been involved to date and hope to work on advancing this part of the project through 2022.

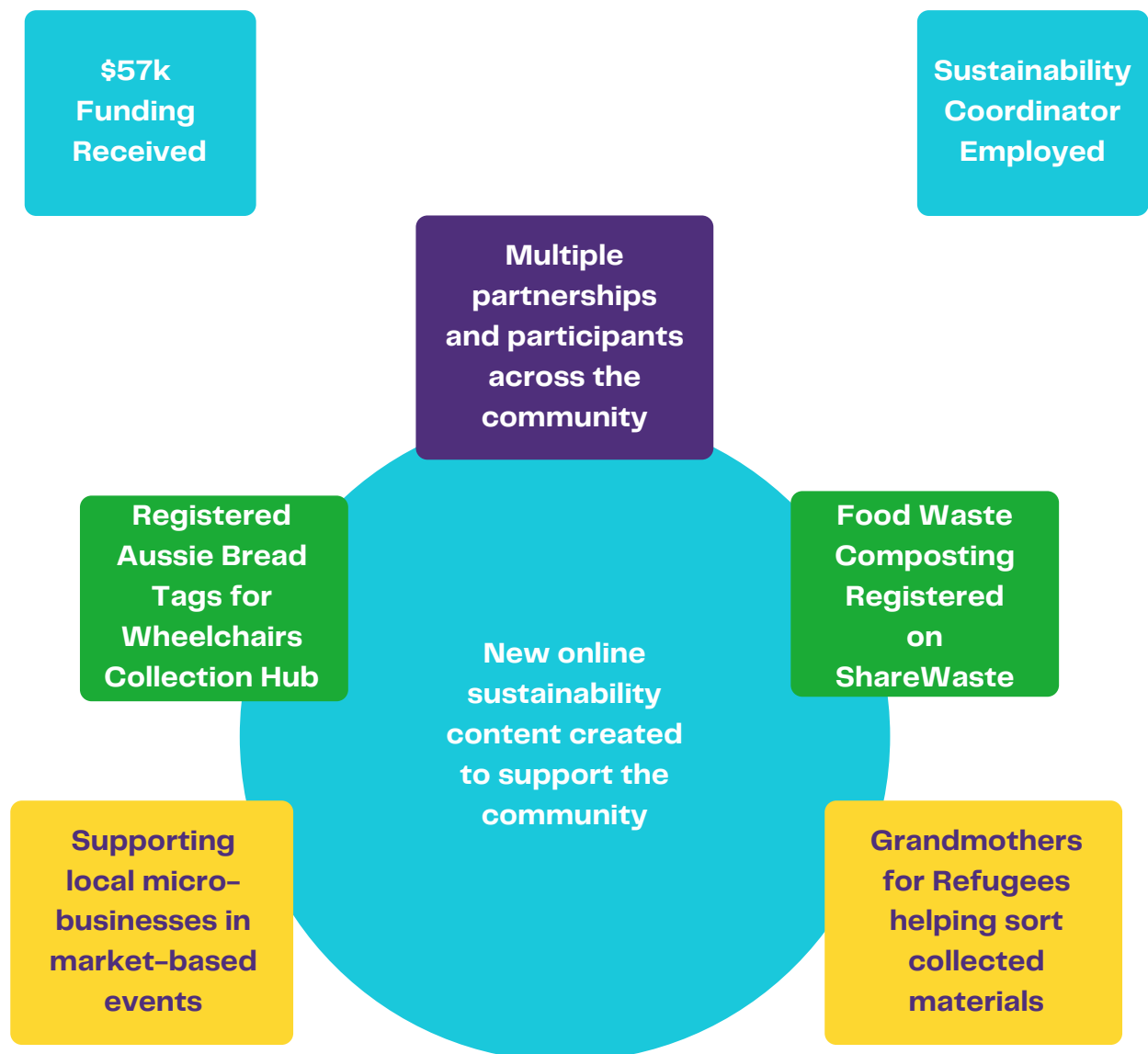
7



Sustainability continued

There have been multiple highlights since the project kicked off in October 2021.

We are delighted with where we are at to date and are continuing this good work with the funding in place through to September 2022.





RRR Hub

Repair, Reuse, Recycle

Kicking Goals for the Community!

✌️

The Span RRR Hub has been up and running since October, and in the last few months we've continued to build on our successes...

➔

1 - Partnering...

Span are partnering with local legends Darebin Hard Rubbish Heroes and Transition Darebin to deliver this project




#

2 - Funding...

\$

The project is supported by Sustainability Victoria on behalf of the Victorian Government.




3 - Collecting...

We're testing new streams for ongoing collection, looking for reuse options where possible.

So far we've diverted lots of material types...



- Recycling: 10
- Reuse: 36




4 - Sustainability Events...

- Events Delivered: > 10
- People Attended: > 450 people
- Local Businesses supported: > 20

6 - Material Success...

We are aiming to find direct community uses for as many things as possible.

- Food waste: > 1,200 kgs collected and composted
- Repair: > 91 items, 163kgs waste avoided
- Reuse: > 1,600 kgs collected
- Recycling: > 120 kgs collected
- Donated: > 450 kgs of items



7 - Onward...

- Open a new external collection hub
- Set up more reuse partnerships locally
- Deliver more events
- Continue building a community of action
- Share learnings & success with others






11 SUSTAINABLE COMMUNITIES



12 SUSTAINABLE CONSUMPTION AND PRODUCTION



13 CLIMATE ACTION

8

Visions of 2021

June Harkness by Tania Chandler

I interviewed June Harkness, and wrote this short piece, during COVID-19 lockdown. June told me about living through the polio outbreak. For June, COVID is 'just another thing.'

June was born in Preston in the winter of 1929. She was named June, not because it was her birth month, but because her mother — the oldest of six children — had a younger sister called Jean, who died at birth. June's grandmother objected to the name, so she was given the one nearest it.

June's childhood home was in Reservoir, not far from where she lives now with two of her five sons. She went to Tyler Street Primary School. In 1937, June's parents were notified by the school about a frightening situation — a poliomyelitis (polio) outbreak. Polio is a highly infectious, sometimes fatal, viral disease that largely affects young children. It can attack the nervous system and cause paralysis. June remembers her school being closed for three months. Children were not allowed to leave their property for any reason. June was an only child — her brother Keith hadn't been born yet. The family at the back had two children; fortunately, there was a gate in the adjoining fence, so they could all play together. June recalls it as a terrific time, and feels sorry for children who have been alone during the current lockdowns.

Although none of June's family or friends contracted polio, she remembers seeing people afflicted with 'the horrible disease being wheeled around the shops in wheelchairs, and lying down in long half-bed-half-wheelchairs.' Some patients were confined to an 'iron lung': a huge metal box attached to a respirator.

Electricity blackouts were more frequent in those days, and June remembers that people with iron lungs in the home were notified to seek alternative power arrangements when thunderstorms were forecast. June also recalls her five sons — Leon, David, Gary, Trevor (passed), and Neil — getting 'the pink stuff on the spoon', along with other vaccinations, many years later. The oral Sabin polio vaccine wasn't available in Australia until 1966 — 29 years after the outbreak which closed June's school, unlike the recent COVID vaccines that have been produced relatively quickly.

8

Visions of 2021 continued



June also recalls tuberculosis (TB), another disease for which there was no vaccination, being prevalent when she was young. TB is a bacterial infection, which usually affects the lungs, but can involve the kidneys, bones, spine, brain and other parts of the body. June remembers there was a TB sanatorium at the back of Mont Park and Larundel. This was Gresswell Tuberculosis Sanatorium for males, which sat on the grounds of Mont Park Hospital in Macleod, and admitted TB patients between 1933 and 1970. 'In those days it was just paddocks and bush out there,' says June. And for her generation, there was no such thing as vaccination.

Every Wednesday, before COVID-19 lockdown, you could find June in a tai chi class at Span Community House in Thornbury. Now, like many of us, she's on Zoom. June says the classes are as much about the company as they are exercise, but 'it's not the same as human connection.'

During lockdown, June has gone for daily walks at the oval near her house. Neil, her youngest son, has done all her food shopping. The thing she misses most — aside from tai chi at Span — is picking out her own fruit and veggies. She says she hasn't bought anything new 'in yonks' and is also looking forward to getting some new clothes when things open up.

For a longer version of June's story through pandemics, bush fires and war, please refer to Span's website.

9 Treasurer's report



For the financial year ended 31 December 2021, Span was able to make a profitable position and continue to provide a secure environment for staff and volunteers to support the community during the COVID pandemic.

Thanks to Michael Adasko of JP Hardwick and Associates, the auditor of Span, the financial records have been found compliant. Thanks also to our bookkeeper, Evan Butterworth from Butterworth Bookkeeping, for his great service.

Span has received a total income of \$441,062 in FY 2021, similar to the total income in FY 2020 (\$477,545). It should be noted there was a significant drop in the JobKeeper payments and Cash Flow Boost payments in FY 2021, compared to FY 2020.

The major increase in the total income is due to the growth in the DHHS Supporting Carers Locally income and other grant income in FY 2021. Additionally, as the lockdown restrictions have been steadily eased, the course fees income has increased from \$21,894 in FY 2020 to \$35,386 in FY 2021.

Income	FY 2021 Amount	FY 2020 Amount
DHHS Supporting Carers Locally	\$17,982	\$0
Grants – Other	\$25,546	\$0
Total Course Fees	\$35,386	\$19,153
Victoria Business Grant	\$50,400	\$20,000

9

Treasurer's Report continued

With the additional grants and DHHS funds received, Span was able to provide the support to our community members during the COVID period. Span implemented the COVID policy and action plan along with the Victorian government instructions. We reopened our Neighbourhood House for our community members in FY 2021. Our online support continued in 2021 and we are currently joining with other Houses in the North East Network to advocate on the important issue of providing internet access to public housing residents.

On the other hand, our operating expenses jumped from \$46,214 to \$70,575 in FY 2021, partly because of the increase in course / project related expenses. Also, the Board of Span undertook additional work to assist with Span's strategic planning and governance training in FY 2021 and how we can better support the community. On this basis, the board and governance expenses have increased significantly in FY 2021.

Similar to prior income years, salaries and wages has been a major outgoing for Span in FY 2021. With an additional employee joining during the financial year, Span has paid a total of \$302,111 in salaries-related expenses, including a total superannuation expense of \$24,969.

Span experienced an overall profit of \$24,771, which is lower than the total profit we achieved in FY 2020. Note however, this profit position was much better than the amount included in our FY 2021 budget as we initially expected a break-even position with the drop in the JobKeeper payments and government grants. The FY 2021 profit continued to enhance Span's financial position. Span had a sound financial position in 2021 with \$282,493 cash at bank. Net assets as at 31 December 2021 are \$214,713, a slight increase from FY 2020. This well maintained financial position gives Span more financial flexibility and security for our future development or any potential risk.

Thanks to our dedicated volunteers, manager and staff for making this a good year at Span Community House.

Yu Sun



10 Financial Statements



To the members of Span Community House Inc.:

Report on the financial report

We have audited the accompanying financial report, being a special purpose financial report of the Span Community House Inc. (the association), which comprises of the balance sheet as at 31st December 2021, the income statement, statement of changes in equity and statement of cash flows for the year then ended, notes comprising a summary of significant accounting policies and other explanatory information, and the committee's report.

Committee's responsibility for the financial report

The committee of the association is responsible for the preparation of the financial report, and has determined that the basis of preparation described in Note 1, is appropriate to meet the requirements of the Associations Incorporation Reform Act 2012 and Australian Charities and Not-for-profits Commission Act 2012 (ACNC Act). The committee's responsibility also includes such internal control as the committee determines is necessary to enable the preparation of a financial report that is free from material misstatement, whether due to fraud or error.

Auditor's responsibility

Our responsibility is to express an opinion on the financial report based on our audit. We have conducted our audit in accordance with Australian Auditing Standards. Those standards require that we comply with relevant ethical requirements relating to audit engagements and plan and perform the audit to obtain reasonable assurance whether the financial report is free from material misstatement.

An audit involves performing procedures to obtain audit evidence about the amounts and disclosures in the financial report. The procedures selected depend on the auditor's judgement, including the assessment of the risks of material misstatement of the financial report, whether due to fraud or error. In making those risk assessments, the auditor considers internal control relevant to the association's preparation of the financial report that gives a true and fair view, in order to design audit procedures that are appropriate in the circumstances but not for the purpose of expressing the appropriateness of accounting policies used and the reasonableness of accounting estimates made by the committee, as well as evaluating the overall presentation of the financial report.

Financial Statements continued

We believe that the audit evidence we have obtained is sufficient and appropriate to provide a basis for our audit opinion.

Independence

In conducting our audit, we have complied with the independence requirements of the Australian professional ethical pronouncements.

Auditor's opinion

In our opinion the financial report of the association has been prepared in accordance with the Association Incorporation Reform Act 2012 and Australian Charities and Not-for-profits Commission Act 2012 (ACNC Act) including:

- a) giving a true and fair view of the entity's financial position as at 31st December 2021 and of its performance for the year ended on that date; and
- b) complying with Australian Accounting Standards as referred to in Note 1 to the financial statements.

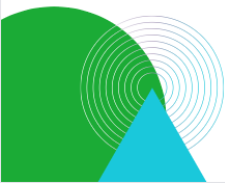
Basis of accounting and restriction on distribution

Without modifying our opinion, we draw attention to Note 1 to the financial report, which describes the basis of accounting. The financial report has been prepared to assist Span Community House Inc. to meet the requirements of the Associations Incorporation Reform Act 2012 and Australian Charities and Not-for-profits Commission Act 2012 (ACNC Act). As a result the report may not be suitable for another purpose.

Stephen George Le Couilliard

ASIC Registered Company Auditor No 8579
J P Hardwick & Associates

31st March 2022



10

Financial Statements continued

SPAN COMMUNITY HOUSE INC

Financial Statements for the year ended 31 December 2021

	Note	2021 \$	2020 \$
Asset			
Current Assets			
Cash and cash equivalents	3	282,493	296,009
Accounts receivable and other debtors	4	<u>24,063</u>	<u>1,286</u>
Total Current Assets		<u>306,557</u>	<u>297,295</u>
Non-current Assets			
Property, plant, equipment	5	<u>32,340</u>	<u>38,047</u>
Total Non-current Assets		<u>32,340</u>	<u>38,047</u>
Total assets		<u>338,897</u>	<u>335,342</u>
Liabilities			
Current Liabilities			
Income in advance	6	43,300	59,192
Trade creditors and other payables	7	26,883	22,901
Employee entitlements	8	<u>52,264</u>	<u>63,307</u>
Total Current Liabilities		<u>122,446</u>	<u>145,400</u>
Non-current Liabilities			
Employee Entitlements	8	1,737	-
Long term borrowings		-	-
Total Non-current liabilities		<u>1,737</u>	-
Total Liabilities		<u>124,183</u>	<u>145,400</u>
Net Assets		<u>214,713</u>	<u>189,942</u>
Equity			
Reserves		265	265
Retained surplus		<u>214,448</u>	<u>189,677</u>
Net Worth		<u>214,713</u>	<u>189,942</u>

10

Financial Statements continued

Income statement for the year ended 31 December 2021

	2021	2020
	\$	\$
Continuing Operations		
Income		
HACC Income		
HACC delivery	46,761	45,564
CHSP funding	15,620	18,863
DHHS Income		
DHHS Supporting Carers	17,982	-
Neighbourhood House Coordination	<u>88,898</u>	<u>84,957</u>
Total DHHS Income	<u>106,880</u>	<u>84,957</u>
ACFE Income		
ACFE delivery	20,545	21,897
ACFE capital equipment grants	<u>5,500</u>	<u>5,500</u>
Total ACFE Income	<u>26,045</u>	<u>27,397</u>
City of Darebin Income		
Darebin Neighbourhood House	53,144	51,710
Darebin - community grants	22,500	20,320
Grants – other	<u>25,546</u>	-
Total City of Darebin Income	<u>101,190</u>	<u>92,030</u>
Fee Income		
Course fees – ACFE	3,155	508
Course fees – HACC	-	2,234
Course fees – FFS	<u>32,231</u>	<u>19,153</u>
Total Fee Income	<u>35,386</u>	<u>21,894</u>



10

Financial Statements continued

Other Income

Interest receivable	530	1,257
Room hire	12,034	4,810
Fund raising and donations	2,059	410
Job Keeper received	41,000	105,900
Government cash flow boost	-	43,696
Victorian business grant	50,400	20,000
Other/sundry income	<u>3,057</u>	<u>765</u>
Total Other	<u>109,180</u>	<u>156,838</u>

Total Income	<u>441,062</u>	<u>447,545</u>
--------------	----------------	----------------

Expenses

Advertising, promotions & events	175	254
Audit & accounting expenses	1,600	1,500
Bank charges	425	456
Board & governance	11,818	855
Bookkeeping fees	5,820	6,095
Cleaning expenses	5,917	2,922
Computer support & consumables	2,231	3,212
Course resources & venue hire	4,040	2,053
Depreciation	5,707	6,714
Donations	300	-
Freight & delivery	-	630
House supplies	1,153	1,485
Insurance	3,205	3,248
Memberships & subscriptions	3,817	2,919
Printing & stationery	786	6,296
Project expenses	10,083	2,740
Repairs & maintenance	5,725	74
Staff training and travel	3,856	1,338
Telephone & internet	3,587	2,945
Volunteer expenses	<u>330</u>	<u>478</u>
Total	<u>70,575</u>	<u>46,214</u>

10

Financial Statements continued

Salaries & Wages		
Salaries & wages – office	276,715	210,281
Superannuation – office	24,969	18,779
Provision for annual leave	7,313	10,613
Portable LSL levy	4,214	3,296
Provision for LSL	-16,620	10,598
Tutor wages – ACFE	1,476	540
Tutor wages – FFS	4,400	25,200
Tutor – superannuation	43	128
Total Salaries & Wages	<u>302,111</u>	<u>268,838</u>
Total Contractors		
Tutors ACFE contractors	8,835	2,925
Tutors FFS contractors	15,523	14,378
Tutors HACC contractors	<u>19,248</u>	<u>17,220</u>
Total Contractors	<u>43,605</u>	<u>45,121</u>
Total Expenses	<u>416,291</u>	<u>360,174</u>
Operating Profit	24,771	87,371
Total Other Expenses	-	-
Net Profit (Loss)	<u>24,771</u>	<u>87,371</u>

Statement of changes in equity for the year ended 31 December 2021

	Retained surplus \$	Reserves \$	Total \$
Balance at 1 January 2020	102,306	265	102,571
Surplus / (deficit) for the year	<u>87,371</u>		<u>87,371</u>
Balance at 31 December 2020	<u>189,677</u>	265	<u>189,942</u>
Balance at 1 January 2021	189,677	265	189,942
Surplus / (deficit) for the year	<u>24,771</u>		<u>24,771</u>
Balance at 31 December 2021	<u>214,448</u>	265	<u>214,713</u>

10

Financial Statements continued

Statement of Cash Flows for the Year Ended 31 December 2021

	Note	2021	2020
Cash from Operating Activities			
Receipts from government and customers		426,642	490,852
Payments to suppliers & employees		(436,668)	(344,071)
Interest received		<u>530</u>	<u>1,257</u>
Net cash provided by operating activities 9(b)		<u>- 13,516</u>	<u>148,038</u>
Cash Flows from Investing Activities			
Net purchases from plant & equipment		-	-
Net cash provided by investing activities		-	-
Cash Flows from Financing Activities			
Proceeds from borrowings		-	-
Repayment of borrowings		-	-
Net cash provided by financing activities		-	-
Net Cash Outflows (Inflows)		<u>- 13,516</u>	<u>148,038</u>
Net Increase / (Decrease) in Cash Held		-13,516	148,038
Cash at beginning of financial year		<u>296,009</u>	<u>147,971</u>
Cash at end of the financial year 9(a)		<u>282,493</u>	<u>296,009</u>

10

Financial Statements continued

Notes to the financial statements for the year ended 31 December 2021

1. Statement of Significant Accounting Policies

a) Statement of compliance

The committee has determined that the incorporated association is not a reporting entity because there are no users dependent on general purpose financial statements. The financial report is a special purpose financial report which has been prepared in order to satisfy the financial reporting requirements of the Associations Incorporation Reform Act 2012.

These financial statements have been prepared in accordance with following Australian Accounting Standards:

AASB 101	Presentation of Financial Statements
AASB 107	Statement of Cash Flows
AASB 108	Accounting Policies, Changes in Accounting Estimates and

Errors

AASB 1031	Materiality
AASB 1048	Interpretation of Standards
AASB 1054	Australian Additional Disclosures

b) Basis of measurement

The financial statements have been prepared on an accrual basis and are based on historical cost and do not take into account changing money values except where specifically stated.

2. Statement of Significant Accounting Policies

The accounting policies set out below have been applied consistently to all periods presented in these financial statements.

c) Property, plant and equipment

Each class of property, plant and equipment is carried at a cost or fair value, less where applicable, any accumulated depreciation and impairment losses.

Plant and equipment

Plant and equipment are measured on the cost basis less depreciation and impairments losses.

The carrying amount of plant and equipment is reviewed annually by the committee members to ensure that it is not in excess of the recoverable amount from these assets. The recoverable amount is assessed on the basis of the expected net cash flows that will be received from the assets' employment and subsequent disposal. The expected net cash flows have been discounted to their present values in determining recoverable amounts.

10

Financial Statements continued

Depreciation

The depreciable amount of all fixed assets, excluding freehold land is depreciated on a straight-line basis over the asset's useful life to the association commencing from the time the asset is held ready to use.

The depreciation rates used for each class of depreciable asset are:

Buildings	2%
Plant and equipment	20%
Motor vehicles	25%

The assets' residual values and useful lives are reviewed, and adjusted if appropriate, at the end of each reporting period.

An asset's carrying amount is written down immediately to its recoverable amount if the asset's carrying amount is greater than its estimated recoverable amount.

Gains and losses on disposals are determined by comparing proceeds with the carrying amount. These gains and losses are recognised immediately in profit and loss.

When revalued assets are sold, amounts included in the revaluation surplus relating to that asset are transferred to retained earnings.

a) Impairment

At each reporting date the committee assesses whether there is objective evidence that a financial instrument has been impaired. If any such indication exists, the recoverable amount of the asset, being the higher of the asset's fair value less costs to sell and value in use, is compared to the asset's carrying value. Any excess of the asset's carrying value over its recoverable amount is expensed to the income statement.

b) Income tax

The association is a not-for-profit organisation and is exempt from income tax under section 50-45 of the Income Tax Assessment Act 1997.

c) Cash and cash equivalents

Cash and cash equivalents includes cash on hand, deposits, held at call with banks, other short-term highly liquid investments with original maturities cash within three months.

d) Revenue

Revenue is measured at the fair value of the consideration received or receivable. Donation income is recognised when the entity obtains control over the funds, which is generally at the time of receipt.

e) Inventory

Inventory held for sale are measured at the lower of cost and net realisable value.

10

Financial Statements continued

f) Goods and services tax (GST)

Revenues, expenses and assets are recognised net of the amount of GST, except where the amount of GST incurred is not recoverable from the Australian Taxation Office (ATO). In these circumstances the GST is recognised as part of the cost of acquisition of an asset or as part of an item of expense. Receivables and payables are stated inclusive of GST.

g) Trade creditors and other payables

Trade and other payables represent the liability outstanding at the end of the reporting period for goods and services received by the company during the reporting period, which remain unpaid. The balance is recognised as a current liability with the amounts normally paid within 30 days on recognition of the liability.

Balance Sheet as at 31 December 2021

	2021 \$	2020 \$
3. Cash and Cash Equivalent		
Bendigo Bank account	11,771	13,824
Bendigo Debit Card Account	3,528	420
Bendigo Saving 549	244,078	258,753
Bendigo TD - 689	22,816	22,613
Petty cash	<u>300</u>	<u>400</u>
	<u>282,493</u>	<u>296,009</u>
4. Account Receivables and Other Debtors		
Trade receivables	22,836	359
Prepayments	<u>1,227</u>	<u>927</u>
	<u>24,063</u>	<u>1,286</u>
5. Property, Plant, Equipment		
Furniture & Fittings	75,324	75,324
Less: Accumulated Depreciation	<u>42,984</u>	<u>37,277</u>
	<u>32,340</u>	<u>38,047</u>
Total Plant & Equipment	<u>32,340</u>	<u>38,047</u>

10

Financial Statements continued

6. Income in Advance

Fees received in advance	-	-
Grants in Advance	<u>43,300</u>	<u>59,192</u>
	<u>43,300</u>	<u>59,191</u>

7. Trade and Other Payables

Trade Creditors and Accruals	2,943	5,312
PAYG Payable	17,668	12,046
GST payable	6,407	4,493
GST Receivable	1,292	-1,476
Accrued Contractor Wages	-	-
Superannuation payable	<u>1,156</u>	<u>2,527</u>
	<u>26,883</u>	<u>22,901</u>

8. Employee Entitlements

Provision for Annual Leave	45,057	37,744
Provision for Long Service Leave - current	7,207	25,563
Provision for long service leave – long term	<u>1,737</u>	-
	<u>54,001</u>	<u>63,307</u>

9. Cash Flow Information

Reconciliation of cash

Cash at the end of financial year as shown in cash flow statement is reconciled to items in the statement of financial position:

Cash and cash equivalents	<u>282,493</u>	<u>296,009</u>
a) <u>282,493</u>		<u>296,009</u>

Reconciliation of net cash provided by operating activities to surplus

Surplus from ordinary activities	24,771	87,371
----------------------------------	--------	--------

Non-cash flows in profit

Depreciation	5,707	6,714
--------------	-------	-------

Changes in assets and liabilities:

(Increase)/decrease in receivables	-22,777	12,438
(Increase)/decrease in inventories	-	-
Increase/(decrease) in payables	<u>-22,777</u>	<u>41,525</u>
Net cash provided by operating activities	b) <u>(13,516)</u>	<u>148,038</u>

10

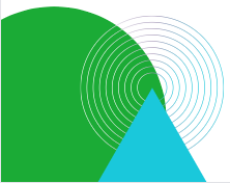
Financial Statements continued

10. Related Parties

There were no related party transactions conducted during the year.

11. Economic Dependence

The entity is economically dependent on State Government departments for grant funding. If funds are not spent in accordance with grant conditions the departments can suspend future grants or reclaim all or part of the grants. The entity is dependent on the continued receipt of grants.



**Thanks
2021.
It's been
real!**



We hope you've learned something interesting about us and what we do to support our local community.

We'd love for you to come join our classes or volunteer to support one of our many programs, so please jump on to our website or call us to learn more about becoming active locally.

Span - it's your house!

Contact Us

A - 64 Clyde St, Thornbury
P - 03 9480 1364
E - info@spanhouse.org
W - www.spanhouse.org

Scan for More Info

